

USER MANUAL



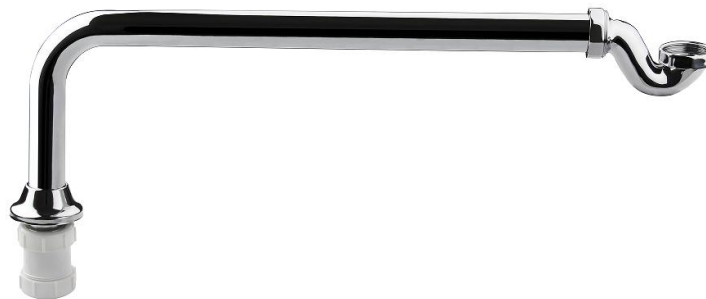
Thank you for choosing Better Bathrooms.
Please read this manual before installing your product
and keep for future reference.

**better
bathrooms**

Traditional Exposed Bath Trap - Chrome CHEXPBT2

Traditional Exposed Bath Trap - Matt Black MBEXPBT2

Traditional Exposed Bath Trap - Brushed Brass BBEXPBT2



CENTRAL IMAGE HERE FOR REFERENCE ONLY

- **Single-person assembly**
- **Tools required**
- **We always recommend using professional tradespeople to install your product**

V1_10.03.25

And welcome to our growing gang of savvy shoppers

We're on a mission to bring you extraordinary bathroom products, for less. From modern to traditional style ceramics, plus the gorgeous fixtures, fittings and furniture to match. So, you can fall in love with your space every single day.

As one of the UK's largest independent bathroom stores, we've received countless awards; including the National Business Awards UK, the Digital Entrepreneur Awards and being placed on The Sunday Times Fast Track 100.

We hope your new product goes above and beyond your expectations. However, should any problems occur, please:

- log in to your account and contact our customer services team via your self-serve portal – betterbathrooms.com/CustomerAccount/Login
- contact us via betterbathrooms.com/content/contact-us

Important information

- Please read these instructions thoroughly and retain for future reference
- The outlet bend could be cut to the required length

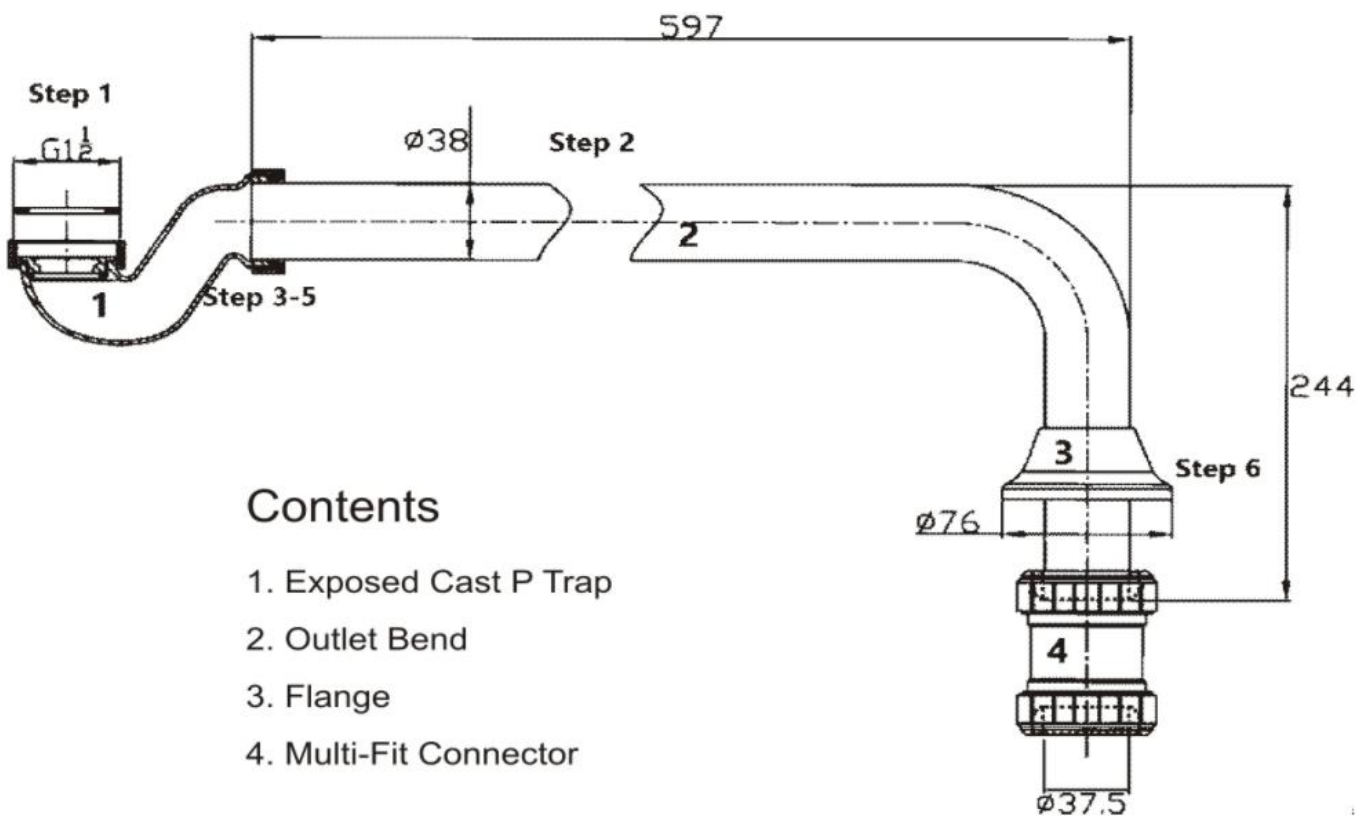
Tools required (Tools not provided)



Warning: Please use a soft cloth to protect the tool or cover the surface to prevent any scratches.

Installation Steps

1. Connect trap to the bath waste, ensuring the washer is in place.
2. Cut the outlet bend to the required length (for wall or floor outlet).
3. Slide the free nut onto the outlet bend, flanged side first.
4. Place the washer and rubber seal onto the outlet pipe.
5. Tighten the free nut onto the trap.
6. Fit the flange over the short end of the outlet bend.
7. Check for any leaks.
8. Push the flange against floor or wall.



Contents

1. Exposed Cast P Trap
2. Outlet Bend
3. Flange
4. Multi-Fit Connector



Cleaning

Please be advised that no abrasive agents or materials or harsh chemicals can be used for cleaning this product, otherwise warranty will be void.

Please clean with warm soapy water, and use soft cloth only.

For more information

- visit betterbathrooms.com
- email customerservices@buyitdirect.co.uk
- call 0330 390 3062
- write to Trident Business Park, Neptune Way, Huddersfield, HD2 1UA

**better
bathrooms** 

Part of the BuyItDirect Group